

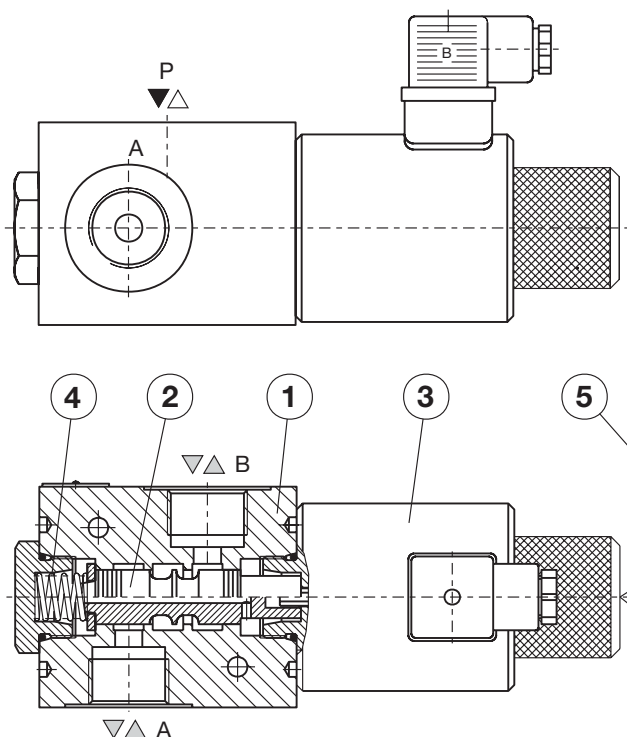
3/2-WAY DIRECTIONAL VALVE Type KVC-3/2-10-...

- NS 10
- to 210 bar
- to 60 l/min
- Direct operation by solenoid
- Direct in-line mounting
- Plug-in connector for solenoids to ISO 4400
- Threaded connections to ISO 9974, ISO 1179



KVC-3/2-10

Description of operation

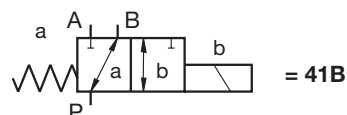


Directional valves type KVC-3/2-10 with direct solenoid operation are used to control the direction of hydraulic fluid flow. Type KVC-3/2-10 is a reduced version of type KV-6/2. It is used for alternate control of two one-pipe working units (e.g. Plunger) with common, main directional valve. These valves consist of a housing (1), control spool (2), solenoid (3) and two return springs (4).

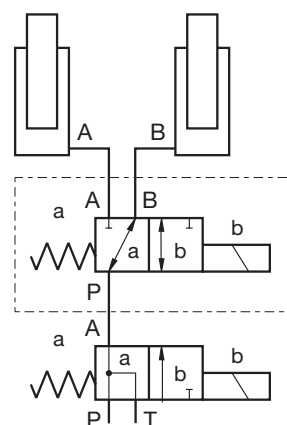
The basic control position is a, in which the return spring holds the control spool (2) in its start position. The change-over to the position b is performed by energizing the solenoid (3), whereas the solenoid plunger pushes the slide into the new position. Consequently, the path from P to B is closed, and the path from P to A is freed. By interrupting the electric control signal of the solenoid, the spool returns to its neutral position a due to the action of the return spring (4).

The change-over can also be done manually by pressing the emergency hand operator (5).

Symbol (spool type)



Mounting example



Technical data

Hydraulic

Size		10
Flow rate	l/min	60
Operating pressure	bar	210
Oil temperature range	°C	-20 to +70
Viscosity range	mm ² /s	15 to 380
Mounting position	optional	
Mass	kg	3,75
Filtration	NAS 1638	8

Electrical

Supply voltage	V	12, 24
Power	W	45
Switching frequency	1/h	15000
Ambient temperature	°C	to +50
Coil temperature	°C	to +180
Intermittence	100%	

Ordering code

KVC-3/2-10 - - - - *

Spool type	
Supply voltage	
Threaded connections	
Plug-in connector	
Seal type	
Special requirements to be briefly specified	

Supply voltage

direct voltage 24 V = no design.
direct voltage 12 V = 12 DC

Threaded connections

M18x1,5 = no design
M22x1,5 = M22
M20x1,5 = M20
G3/8 = G3/8
G1/2 = G1/2

Plug-in connector

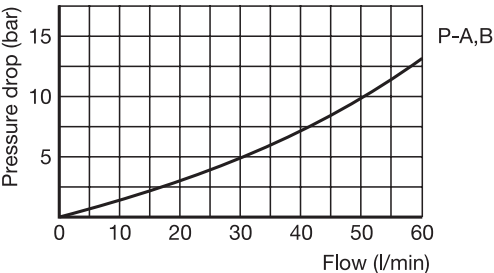
without signal lamp = no desg.
with signal lamp = L

Seal type

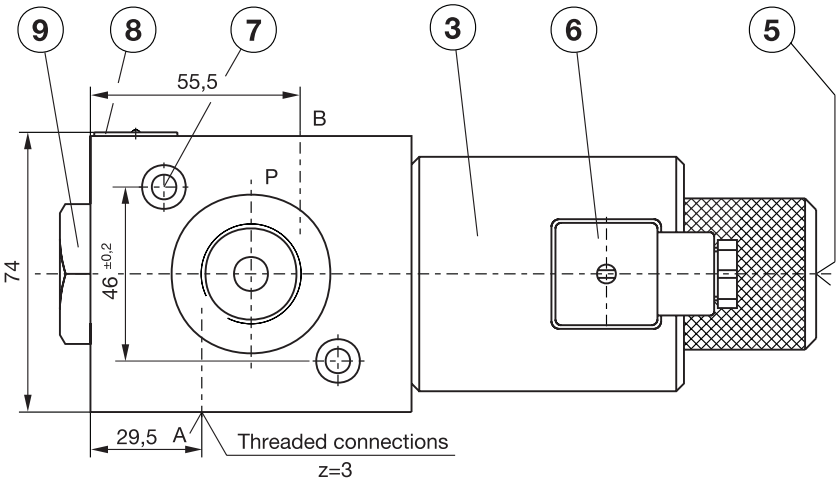
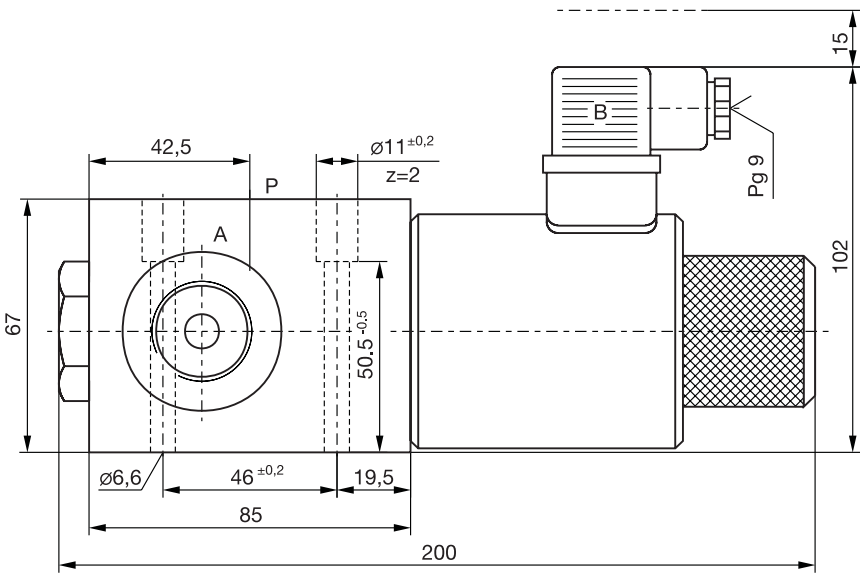
NBR seals for mineral oil HL, HLP to DIN 51524 = no design.
FPM seals for HETG, HEES, HEPG to VDMA 24568 = E
and ISO 15380

Δp - Q Performance curves

(measured at $t = 50\text{ }^{\circ}\text{C}$ and $v = 32\text{ mm}^2/\text{s}$)



Dimensions (mm)



- 3. Solenoid "b" MR-060
- 5. Emergency hand operator
- 6. Plug-in connector "b" -black
- 7. Fixing holes for screws
DIN EN ISO 4762 (M6x40-10.9)
- 8. Nameplate
- 9. Valve cap